

Livingston Huaxia Chinese School

2025–2026 Academic Year

Parking and Drop-off/Pick-up Rules and Guidelines

The new school year is about to begin. We sincerely thank all parents for their support of the school. To ensure smooth traffic flow, school member safety, and uninterrupted teaching activities as well as a convenient and efficient drop-off and pick-up experience for the parents, the school leadership has had thorough discussions and established the following rules and guidelines.

Parking Lot Rules

- Parent Parking Lots
 - Lot 1, 2, 3 on the north side and Lot 4 near the cafeteria are open to parents and visitors (see green boxed areas in Appendix 1).
 - For Lot 1, 2, 3, please enter from Entrance A, and exit via Entrance A or drive through the lot and leave via Exit B. For Lot 4, please enter from Entrance C, and exit via Exit D.
 - **The circular drive is dedicated for temporary drop-off and pick-up. Parents must follow volunteer instructions, stop in order, and leave immediately. No extended stopping or blocking is allowed.**
 - For safety reasons, Drop-Off is not allowed in Lot 4 and 5. Please follow the volunteers' directions.
 - Since parking spaces are limited, especially during the Livingston soccer season (September to November), parents who cannot find parking in Lots 1, 2, 3, or 4 may park in nearby residential areas where parking is permitted (yellow streets shown in Appendix 2). **Please follow traffic regulations when parking and avoid blocking residents' access. The school is not responsible for any parking tickets resulting from violations.**

- Staff Parking Lot
 - **Lot 5 outside the cafeteria is reserved for teachers and staff only** (orange boxed area in Appendix 1).
 - All vehicles must display a school-issued parking permit. Volunteers will check for permits.
 - Teachers and staff should enter Lot 5 from Entrance C, follow the orange route around, and exit through Exit D.

- Other Circumstances
 - To maintain teaching activities, any vehicle parked in Lot 5 without a valid permit that prevents teachers from parking and disrupts teaching activities may be reported to the police, who will issue fines/tickets.

Student Drop-off and Pick-up Rules

- All school members must enter through Gate 3 and exit through Gate 2 (cafeteria) at dismissal. Please refer to the yellow arrows in Appendix 1 for routes.
- Please be sure to communicate with your child in advance. If parents are unable to arrive on time for pick-up, children should wait patiently in the cafeteria.
- When exiting through Gate 2 and crossing Lot 5 after dismissal, please stay alert and watch for traffic to ensure safety.

李文斯顿华夏中文学校

2025-2026 学年

停车和接送规则及指南

新学年开学在即，非常感谢各位家长对于中文学校的支持。为了在便利家长接送孩子的同时，保证学校交通秩序，保障人员安全和老师们教学活动顺利开展，经过校领导深入讨论，做出如下规则和指南。

停车场使用规则

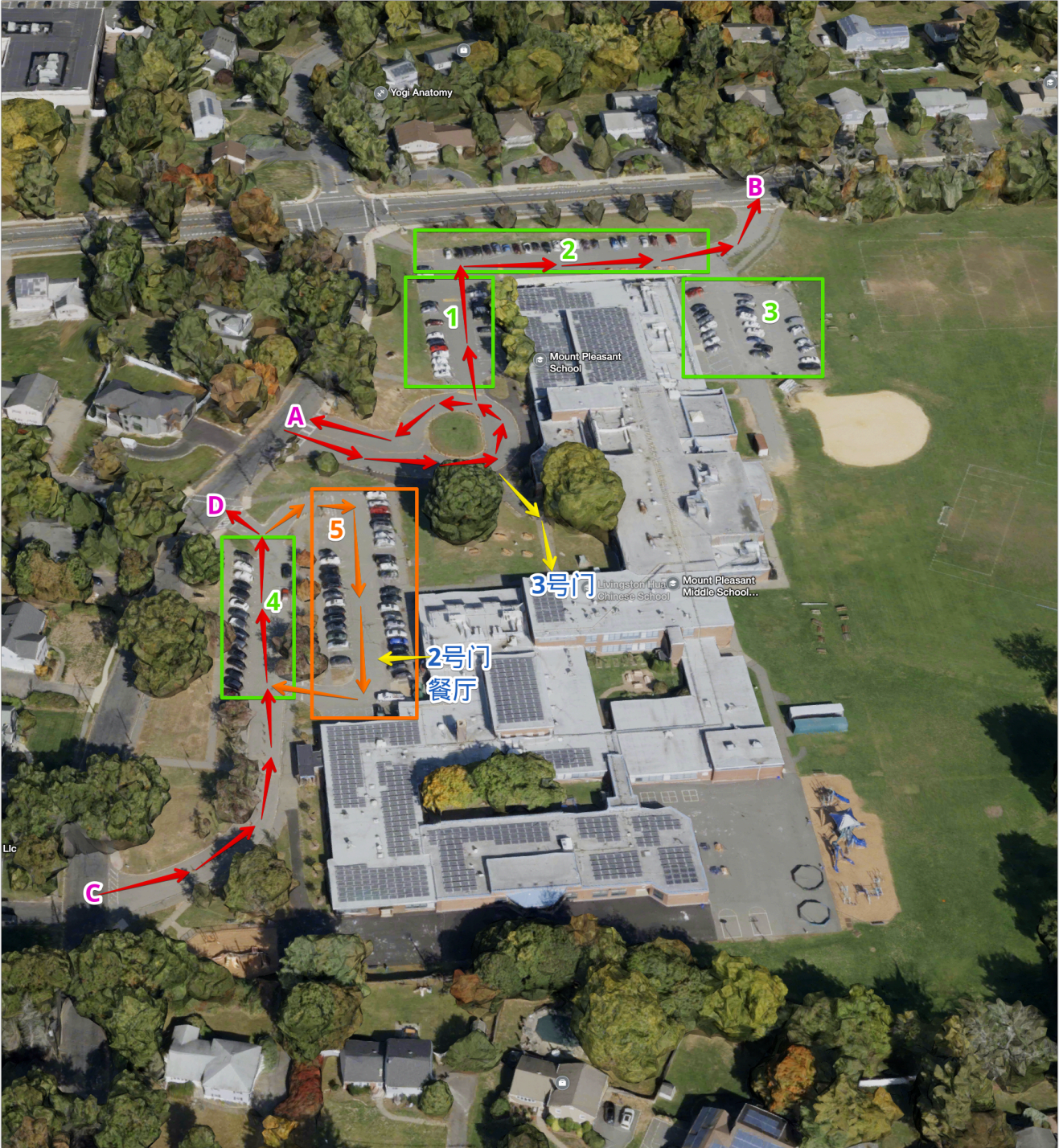
- 家长停车场
 - 学校北边的停车场 1、2、3 和餐厅外停车场 4 对家长以及访问者开放。(附图一绿色框区域)
 - 停车场 1、2、3请从A口进入，绕环形路从A口或者经停车场从B口离开。停车场 4 请从入口 C 进入，D 出口离开。
 - **环行路是上下学临时停车区域，接送孩子的家长需要配合志愿者的指挥，依次停靠，即停即走，不得长时间占道。**
 - 出于安全考量，停车场 4 和 5 都不允许 Drop Off，请大家配合家长志愿者的指挥。
 - 由于学校停车位有限，特别是在李文斯顿足球赛季(九月至十一月)，未在1, 2, 3, 4找到车位的家长可将车辆停放在附近允许停车的居民区。附图二中标注的黄色区域均可停车。**请在停放的时候遵守交通规则，避免影响居民出行。学校对于没有按照交通规则而导致的罚款，罚单概不负责。**
- 教职工停车场
 - **学校餐厅外的停车场 5 只对学校教师及工作人员开放**(附图一橘色框区域)。
 - 所有车辆必须出示学校颁发的停车证才能停车，请大家配合家长志愿者的检查。
 - 教职工停车请从入口 C 进入停车场 5，沿橘色路线绕行一周从出口 D 离开停车场。
- 其他情况
 - 为了保障学校正常教学秩序，对于无停车证在5号停车场停车，且造成老师不能及时停车影响教学工作的车辆，学校保留报警(由警察介入并开罚单)的权利。

学生接送规则

- 所有学校成员请使用3号门进入学校，放学请使用2号门(餐厅) 出口离开。路线请参阅附图一黄色箭头部分。
- 请务必提前与孩子沟通好，如遇家长放学时不能及时赶到的情况，请孩子在学校餐厅耐心等待。
- 从2号门放学穿越5号停车场时请务必注意安全。

Appendix 1: The green boxes indicate parent parking lots, and the orange box indicates staff parking lot.

附图一:绿色框为家长停车场, 橘色框为教职工停车场。



Appendix 2: Parking is allowed along the yellow roads. Parking is prohibited along the red roads and will result in a ticket.

附图二:黄色道路可以街边停车。红色道路禁止停车, 会收到罚单。

